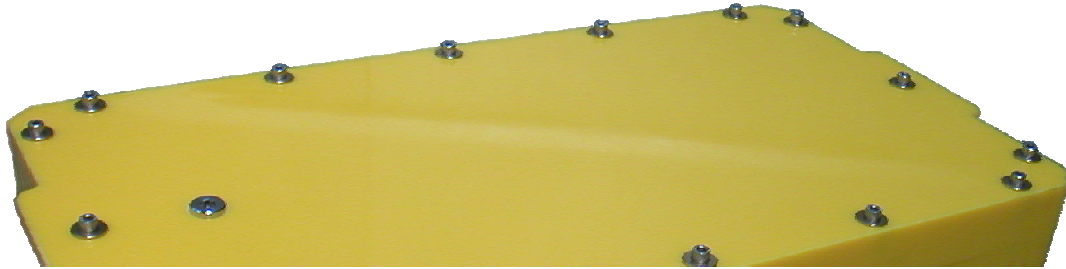
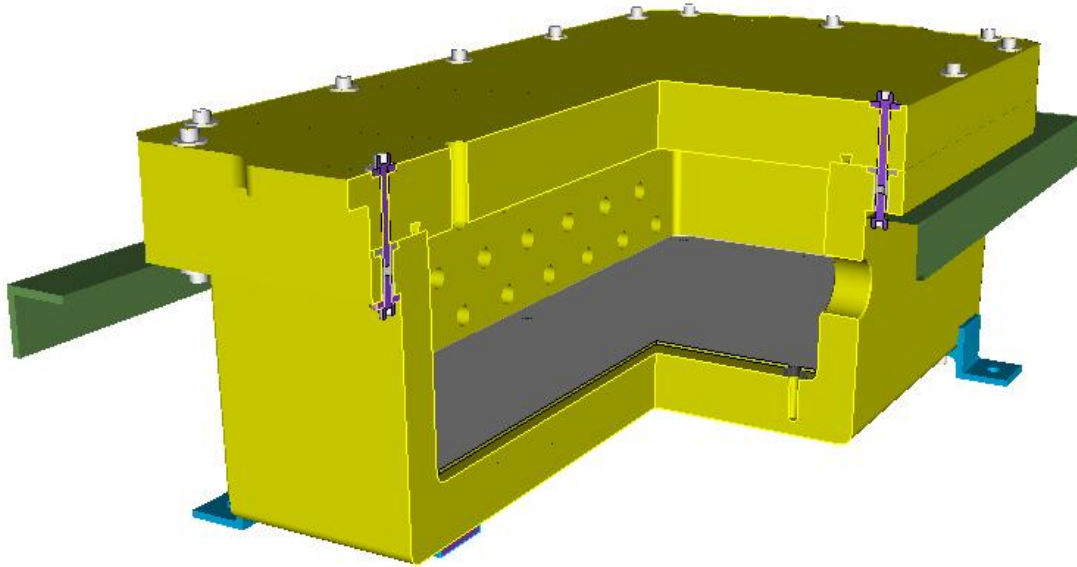


Sea Chest



Material	Rigid Polyurethane	
Units	Metric	Imperial
Internal volume	35.5 Litres	9.4 US/gal
Depth Rating	80 Metres	262 feet
Internal Length	650 mm	25.59"
Internal Width	300 mm	11.81"
Internal Depth	180 mm	7.08"
Thickness of the side wall	30 mm	1.18"
Weight in air	55 kg	122 lb
Weight in water	-24 kg	-53 lb

Sea Chest – Mounting Options



Sub Plate

The Sub Plate (illustrated in grey) is used for mounting components in a way that isolates them from any deflections of the side walls whilst the housing is under pressure. The plate is supported on six spacers and is typically made from aluminium or stainless steel 3.0 mm thick - other materials available on request.

Fixing the Sea Chest

The most robust method of support is by using stainless steel angle sections (illustrated in green) secured under the flange via the M8 cap screws incorporated. This makes it extremely secure against wave slap etc.

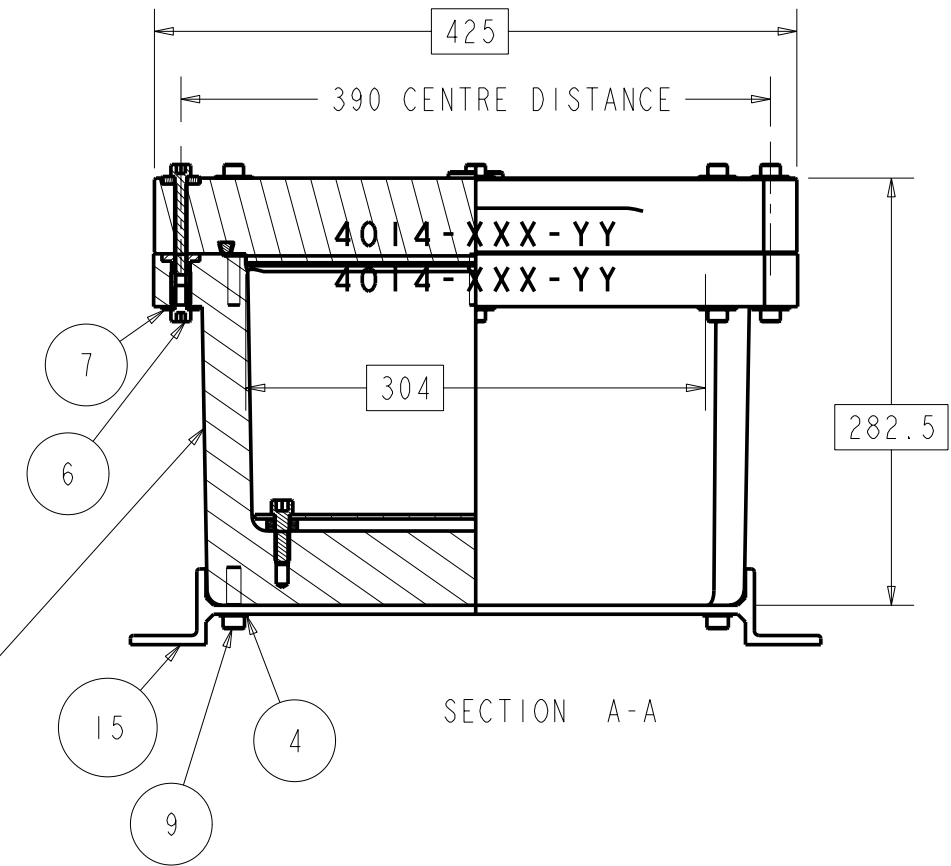
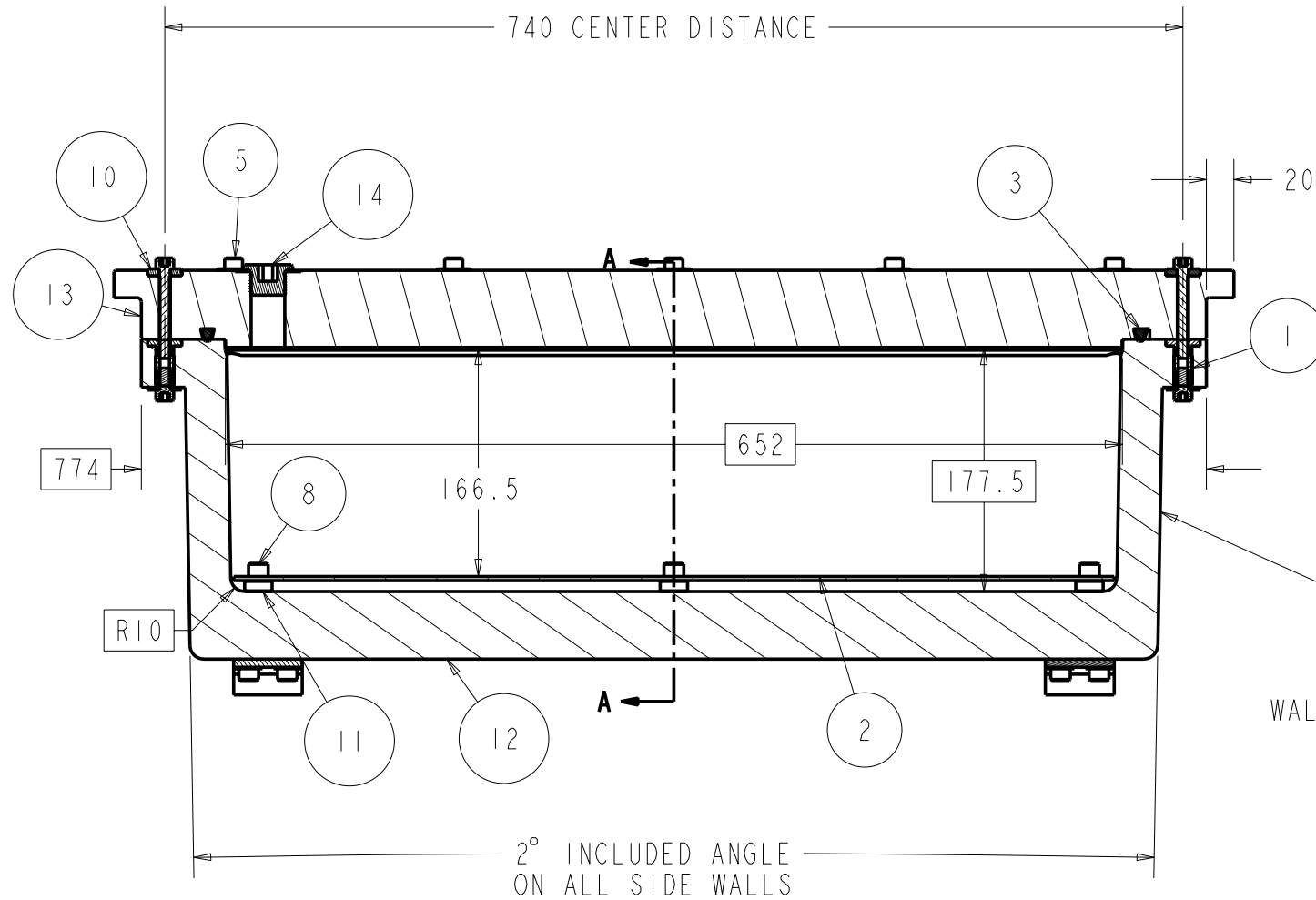
The most convenient method of support is by using the Mounting Feet (illustrated blue) with four M12 bolts the Chest can then be anchored to a wall or floor.

Maintenance

The top surface of the box body flange is a sealing face, it is used by the gasket seal held captive in the lid. This surface must be kept clean and free from scratches or dents.

3RD ANGLE

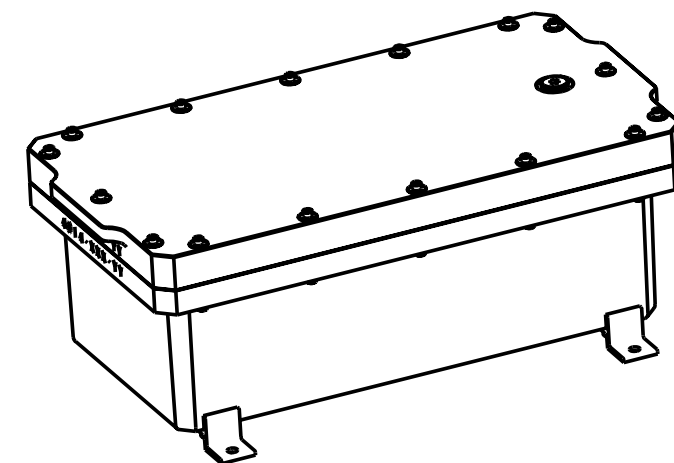
© 2007 THE INFORMATION CONTAINED WITHIN THIS DRAWING IS THE COPYRIGHT OF SEALED ENCLOSURES PTY LTD AND MAY NOT BE USED WITHOUT PRIOR CONSENT



WALL THICKNESS 30


SECTION A-A

ITEM	FILE NAME	DESCRIPTION	MATERIAL	QTY
1	TAPPED	TAPPED INSERT WITH SPLINED BODY	# AL/BRONZE NES833	16
2	SUB_PLATE	MOUNTING PLATE	# ALUMINIUM	1
3	SEAL	CAPTIVE GASKET SEAL	# SILICON RUBBER	1
4	3_8_WASHER	3_8	A4	8
5	M8_65_SS	SCREW-SOC.CAP;M8X65-S.S.	A4	16
6	M816S	SCREW-SOC.CAP;M8X16-S.S.	A4	16
7	M8X25_PENNY_WASHER	M8 X 25 PENNY WASHER	A4	16
8	N3-8X1-1-4S	SCREW;SOC.CAP;3/8-16X1-1/4;S.S.	A4	6
9	N3-8X1S	SCREW;SOC.CAP;3/8-16X1;S.S.	A4	8
10	WASHER	THICK WASHER	A4	16
11	SPACER	PLASTIC SPACER	ACETAL	6
12	HOUSING_BASE	BOX BODY	RIGID POLYURETHANE	1
13	HOUSING_TOP	BOX LID	RIGID POLYURETHANE	1
14	BLANKING_PLUG	BLANKING PLUG M20 X 1.5	ST/STEEL 316S33	1
15	FOOT	BRIDGE STYLE FOOT	ST/STEEL 316S33	2



BOXED DIMENSIONS ARE MOULDED TOLERANCE ± 2

OTHER MATERIALS AVAILABLE ON REQUEST

 www.sealed-enclosures.com Tel 03 8742 3525 Fax 03 9923 6497	FACTORY 4 43-47 RIVERSIDE AVE WERRIBEE VICTORIA 3030 AUSTRALIA	TITLE SEA CHEST - UNDERWATER HOUSING	RATING 70 METERS	SCALE 0.15	DRAWING NO 4014	ISSUE 3	ISSUE DATE 7th Feb 2007	
	MATERIAL SEE TABLE	NOTES	UNITS mm	DRAWN BY E Bowes	CHECKED BY A B	SHEET 1 of 7		